



Campus Inn 2

A PROJECT OF PINE CONSTRUCTIONS



INTRODUCTION

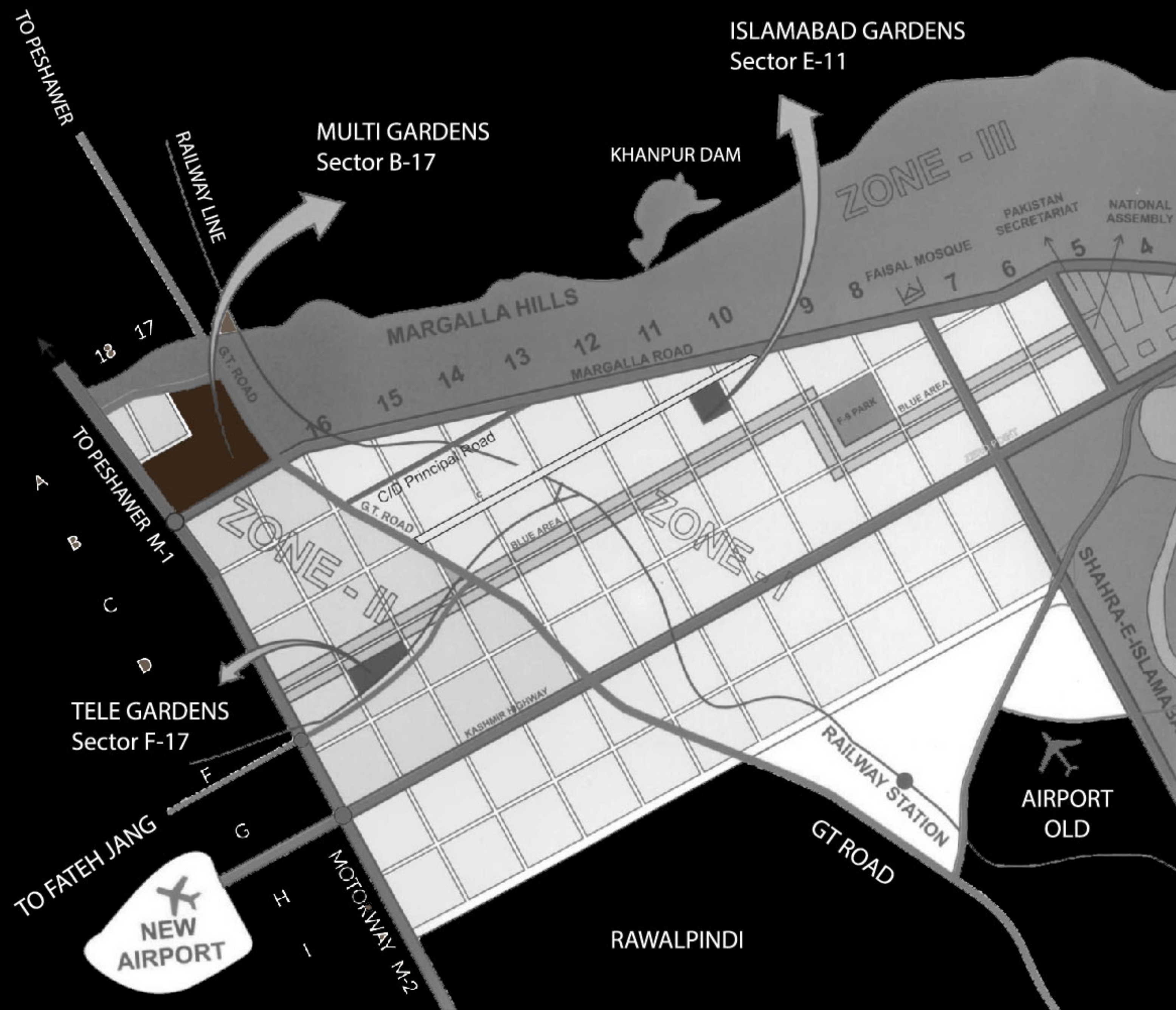
Pine Group Of Companies

With over a decade of experience in construction and with countless residential apartments and villas projects completed to satisfaction, we at Pine Constructions don't just construct buildings, we build trust.

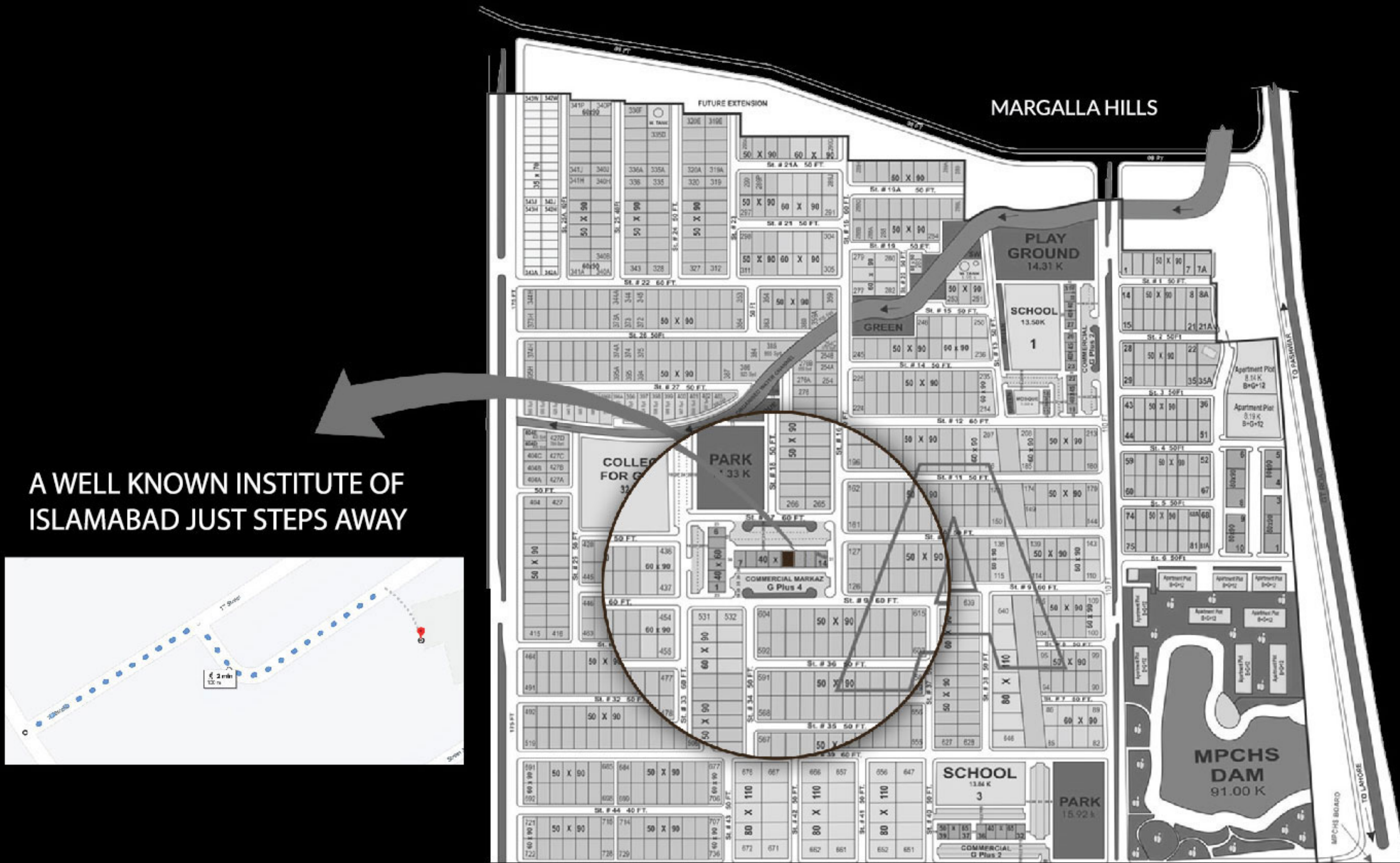
PINE CORE VALUES

Our core values are built around our team of expert engineers in management roles, thoroughly professional in-house contractors and renowned space management consultants. The result of this unique approach is evident in our signature style of construction: aesthetically pleasing and architecturally smart.

MASTER PLAN



MULTI GARDENS SECTOR B-17



ABOUT PINE PROJECTS

Pine Arcade C-1 Commercial, B17

Pine Arcade is our flagship project located in the most scenic sector of Capital Hills B-17, Islamabad. A bull's eye location has been chosen for Pine Arcade in Block C-1 Commercial. It is located at the cross roads of 650+ villas, parks, mosque, hospital, community clubs, shopping malls, security guards round the clock, school, college and 3D cinemas. This offers a very unique opportunity for investors to have more practical rental & investment return.



Pine Business Square,B-1 Commercial,B17

Pine Business Square is our second commercial project located on the main boulevard leading to moterway M1 of the most scenic sector of Capital Hills B-17, Islamabad. B1 Commercial has become the promising Commercial Hub, attracting major investments due to its strategic location. The project is situated at the heart of CPEC link route.

CPEC

CHINA PAKISTAN ECONOMIC CORRIDOR



Pine Inn,B-1 Commercial,B17 MPCHS, Islamabad

Pine Inn, a magnificent design featuring commercial ventures on the lower floors and luxury apartments on the 1st, 2nd, 3rd 4th and 5th floors. Located right on Main Boulevard, the Pine Inn is an ideal investment opportunity at this point in time and one we believe, you should not miss out on.

Working closely with the MPCH to achieve their mission of establishing cooperative housing societies to promote real estate investment and provide quality housing options.



14-EAST, A Block, B-17 MPCHS, Islamabad

A concept was driven from the belief that nature and cities can co-exist, 14 East is bringing a new commercial and residential theory to the real estate scene in Capital City Islamabad. With the next-generation market concept, top brands, like Manolo Gelato, Second Cup etc is the amazing place to make your business boost, up to the sky. As the first and only in the area they stand as landmarks of luxurious, self-sufficient apartments, with only access for the authorized. 14 East catering for its residents an international retail and entertainment experiences. Stockholders will enjoy the convenience of city life and the pleasure of Premium Living.



CAMPUS INN 1

Your Campus at Doorstep - In Campus Inn we have kept the Student at Core of Our Project, we have carefully tailored apartments/living area, high end Information Communication facilities, ensured privacy and security of each student. Here we have made their second home, they can trust us outside campus, where they can focus on what really matters; is to prosper in academic!



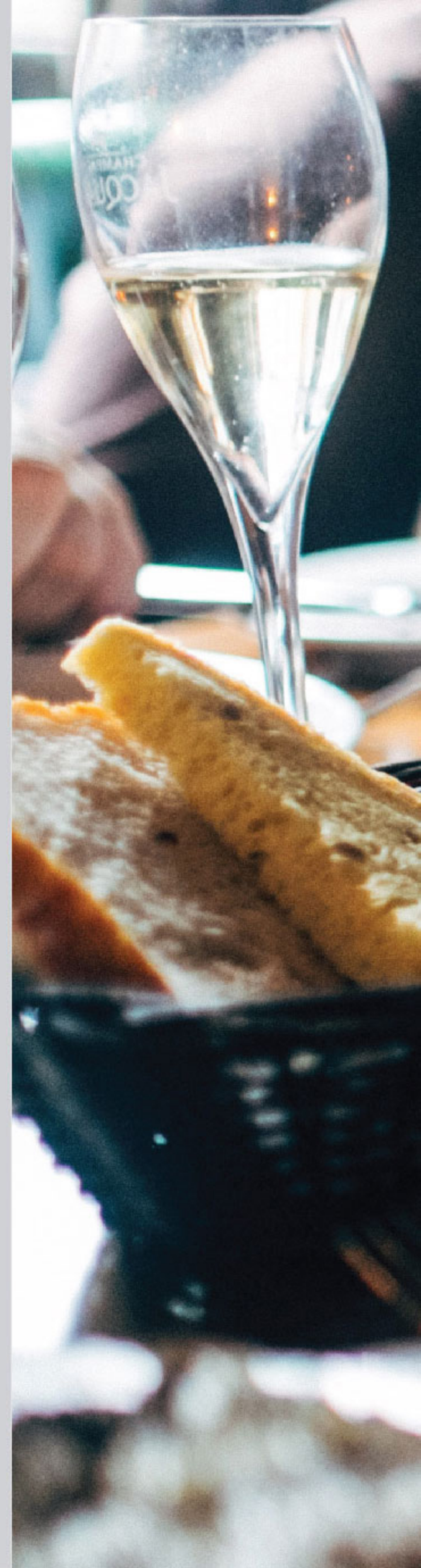
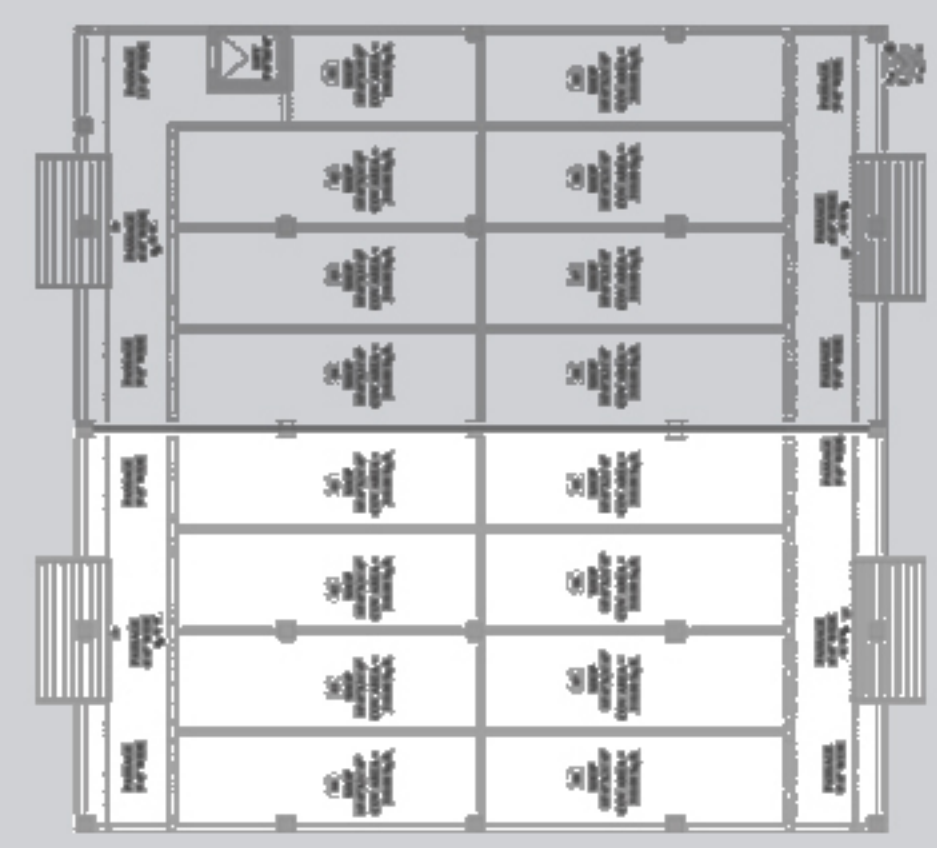
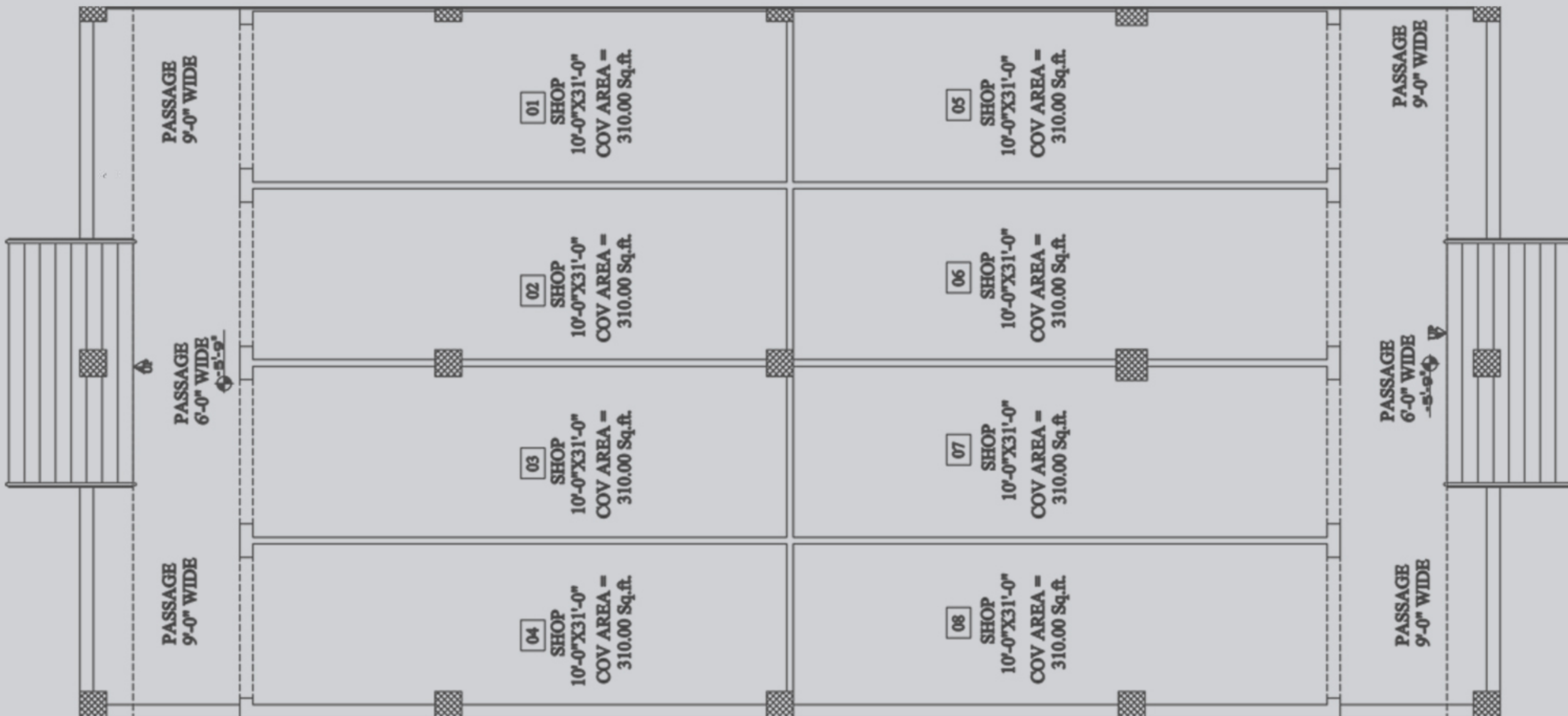
CAMPUS INN 2

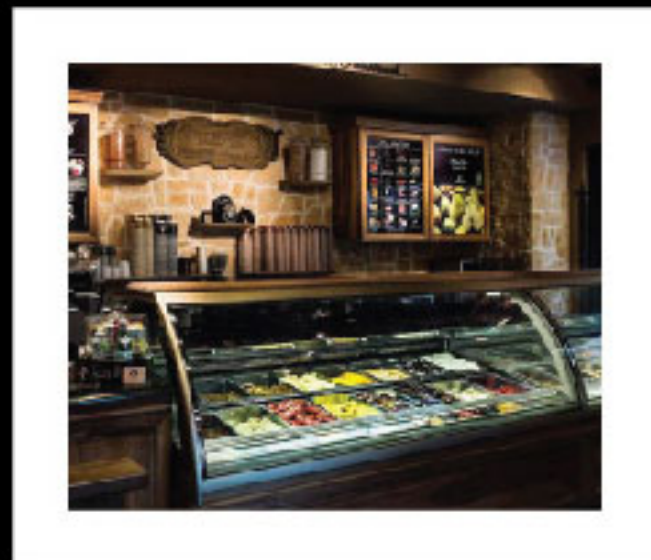




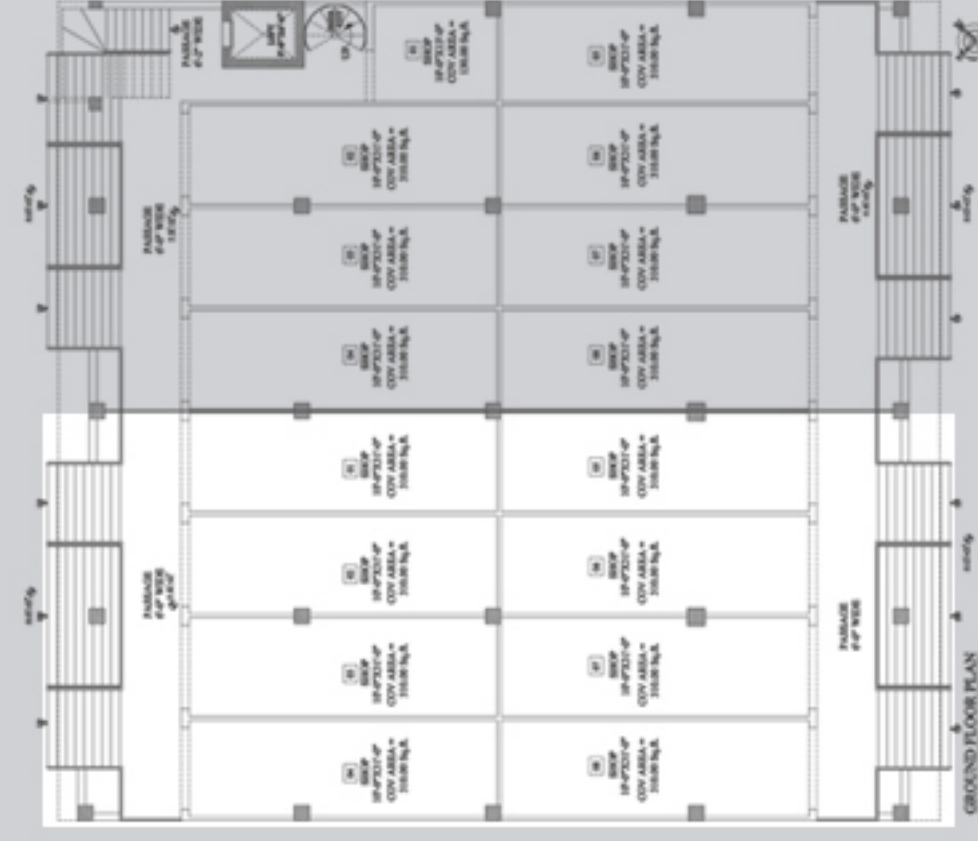
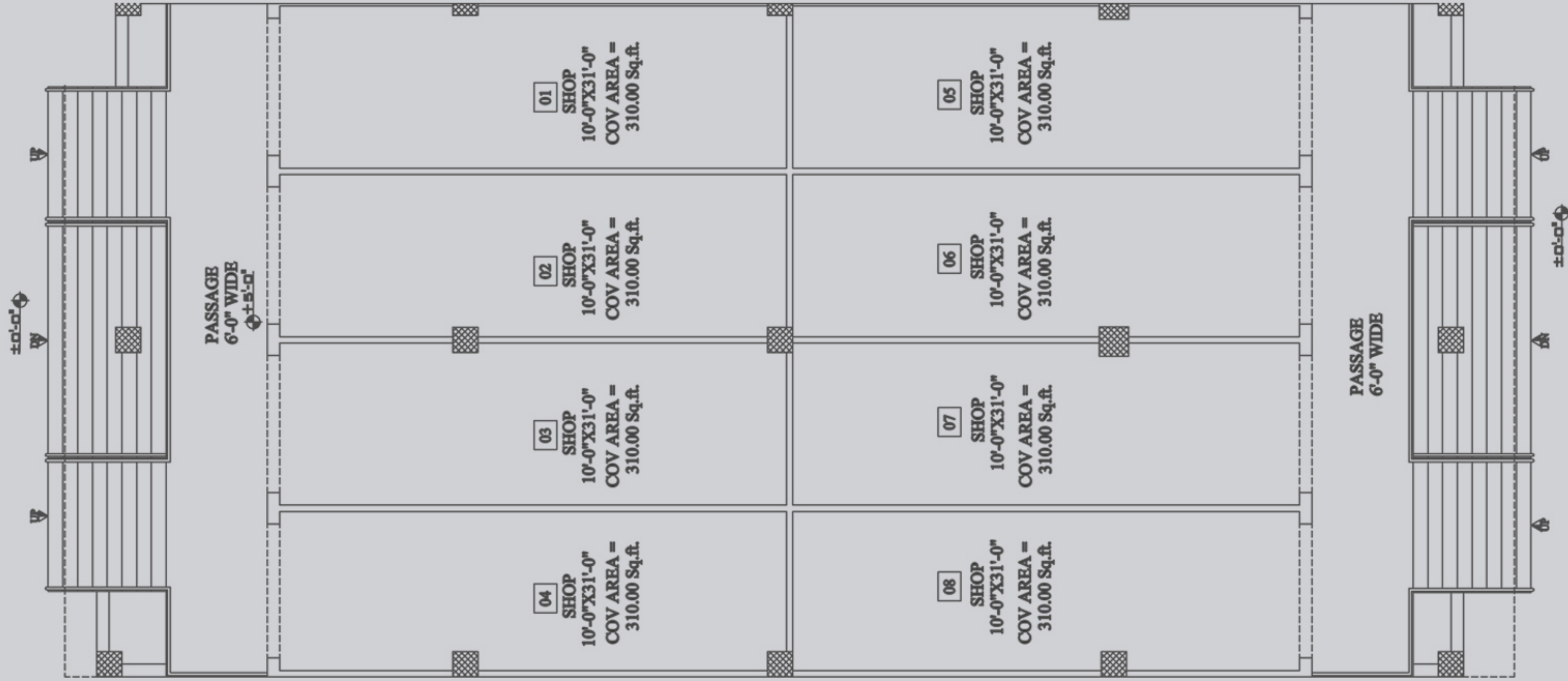
**YOUR
CAMPUS AT
DOORSTEP**

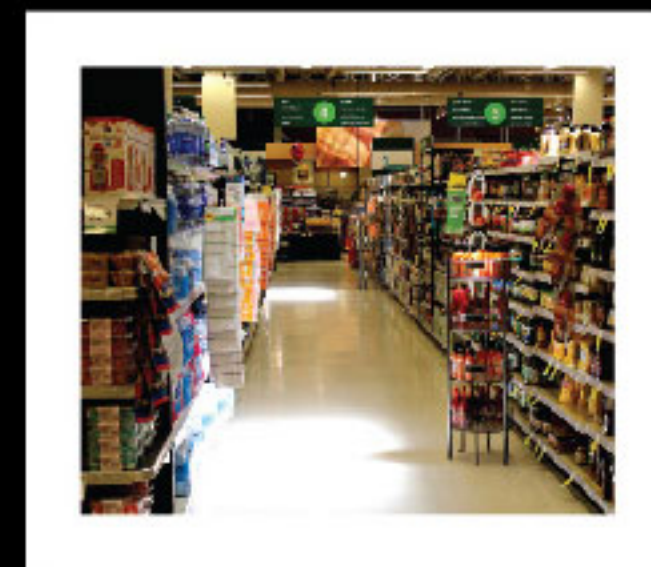
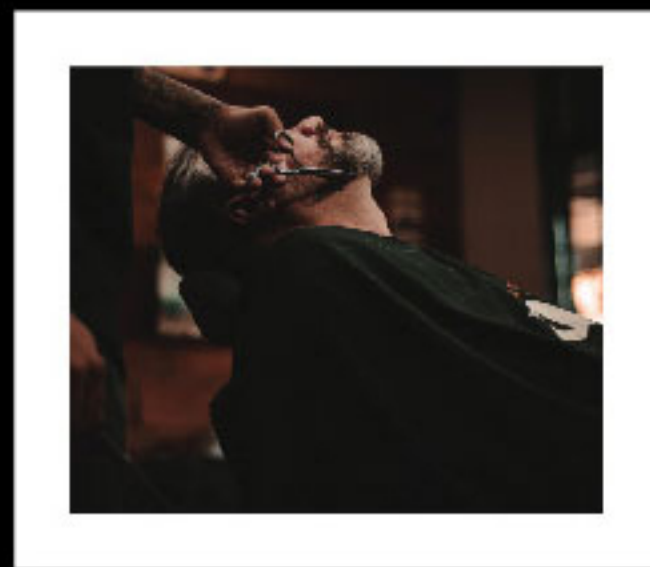
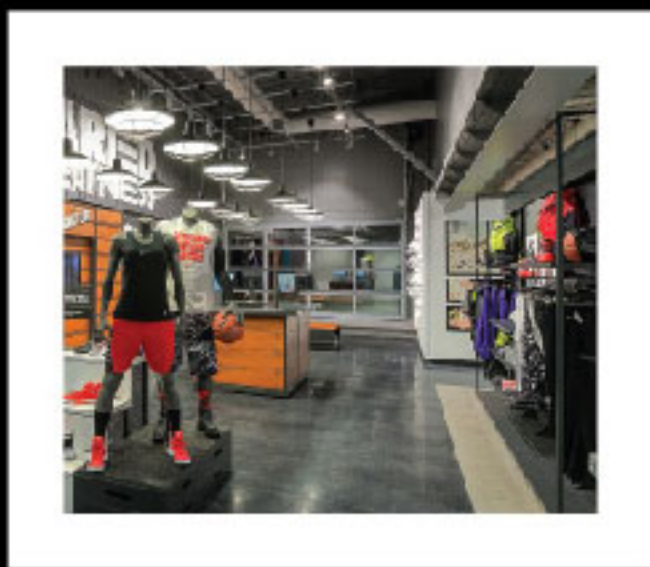
LOWER GROUND FLOOR PLAN



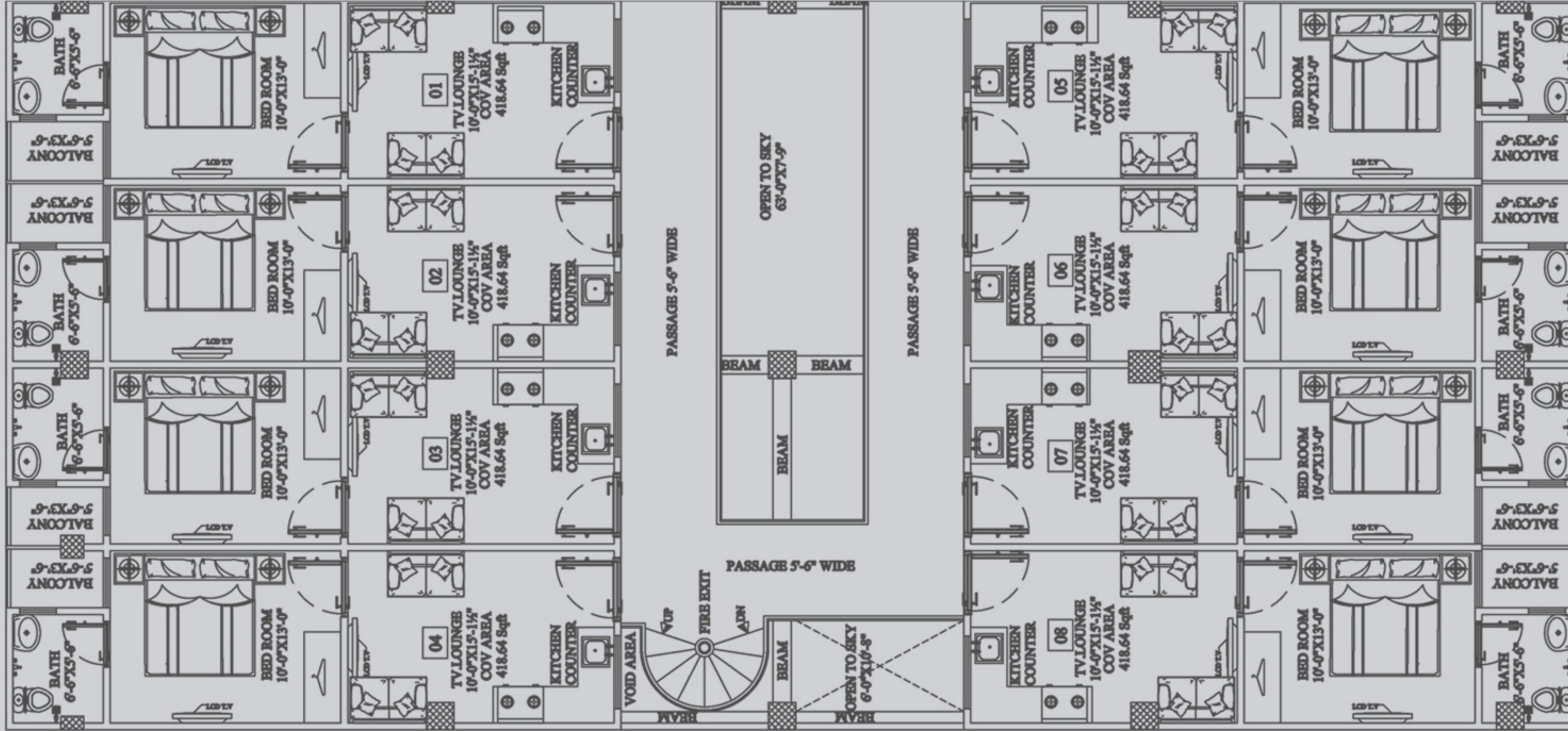
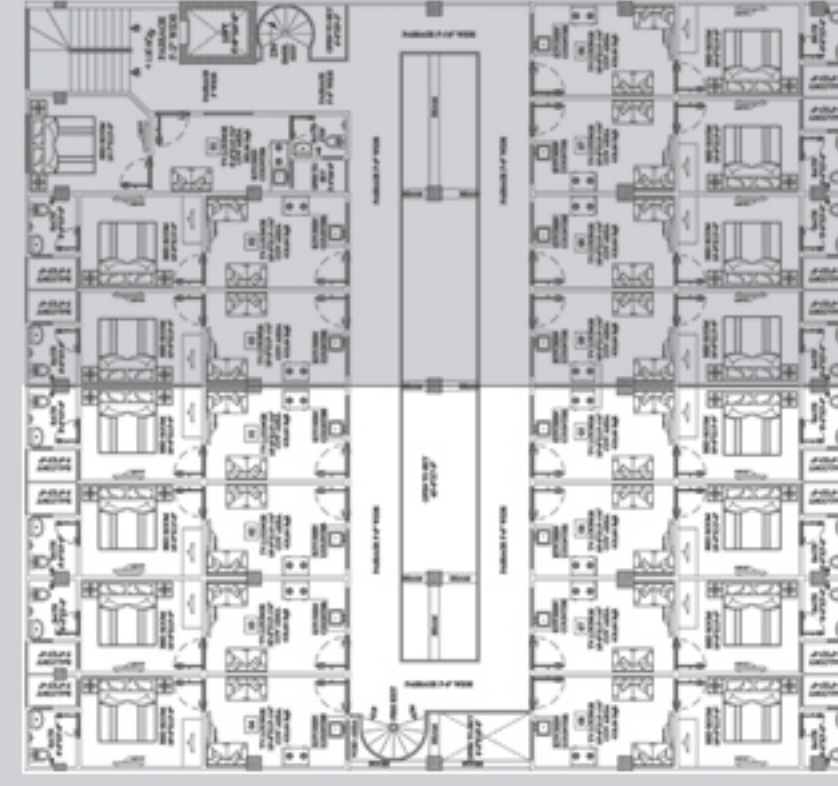


GROUND FLOOR PLAN





PREMIUM APARTMENTS

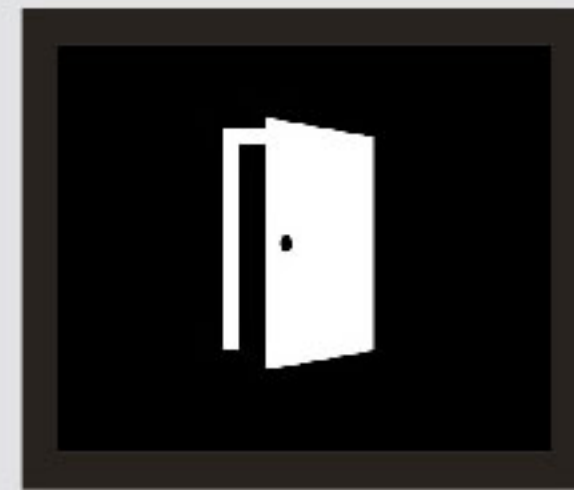




EFFICIENT AND SMART AMENITIES



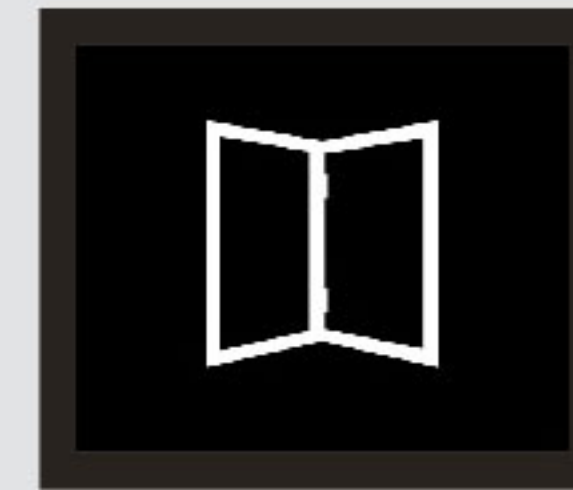
Wifi Ready



Branded Doors



Smart Building



Open to Sky



Airy Rooms



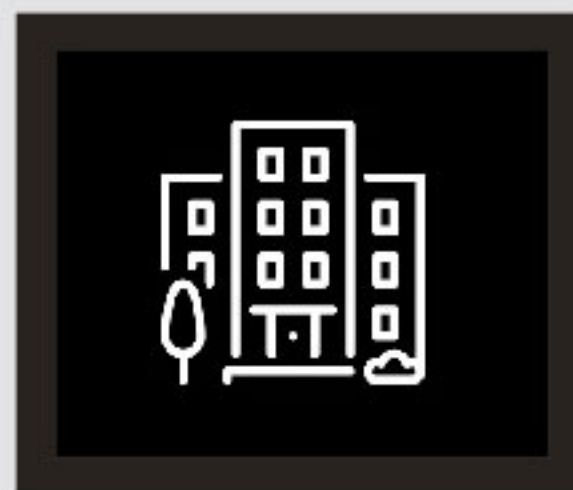
Tailor Made
Kitchen



Imported
Fittings



Corner
Location



Designer
Apartments



Private
Balcony



Spacious
Parking



24/7
Surveillance

ONE BEDROOM APARTMENTS



A Project of	_____	Pine Constructions
Designed by	_____	Concept Design Architect & Designer
Approved by	_____	Multi Professional Co-operative Housing Society (MPCHS)
CDA Sector	_____	B17 Islamabad
Delivery Date	_____	March 2023



PINE GROUP

of Companies

A PROJECT OF PINE CONSTRUCTIONS



HEAD OFFICE Suite No.15 Second Floor, Silver City Plaza G11 Markaz, Islamabad

SITE OFFICE Plot 14, Block A Commercial, B-17, Islamabad

051 - 8741111 | www.pineconstructions.com