



PINE SEVEN

A PROJECT OF PINE CONSTRUCTIONS



INTRODUCTION

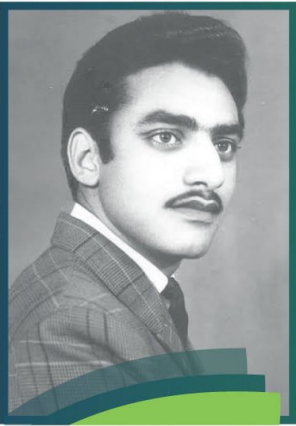
Pine Group Of Companies

With over a decade of experience in construction and with countless residential apartments and villas projects completed to satisfaction, we at Pine Constructions don't just construct buildings, we build trust.

Pine Core Values

Our core values are built around our team of expert engineers in management roles, thoroughly professional in-house contractors and renowned space management consultants. The result of this unique approach is evident in our signature style of construction: aesthetically pleasing and architecturally smart.

FOUNDING FATHERS



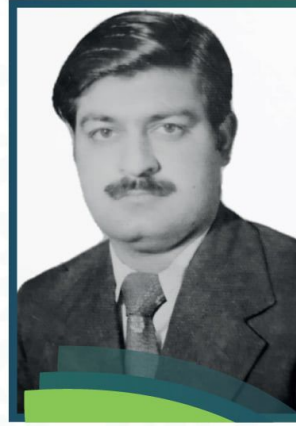
MUSARRAT NAWAZ

Our Founding Father, Electrical Engineer, 30+ Years of Experience in Telecommunications.

He served T&T, Government of Pakistan (currently PTCL) for more than 30-years, deputed Kingdom of Saudi Arabia, Germany and England.

He is happily married to Mrs. Rashida Gul, lady from noble religious family, with four children. She have been loving mother and spiritually and morally supported our father.

He has always preached value of education, impotence of human rights in religion, extremely down-to-earth attitude, where he believes that through these pillar, we can ensure real change in society, as his life story explains himself the value.



SYED SAFDAR IMAM (LATE)

Chartered Accountant, Our Founding, has been one of the leading and renowned businessman, who had actively developed the Nation-wide distribution network of Pakistan's Largest Conglomerate, Pakistan Steel Mill.

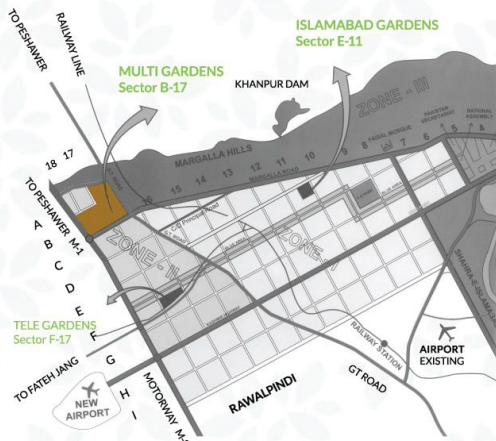
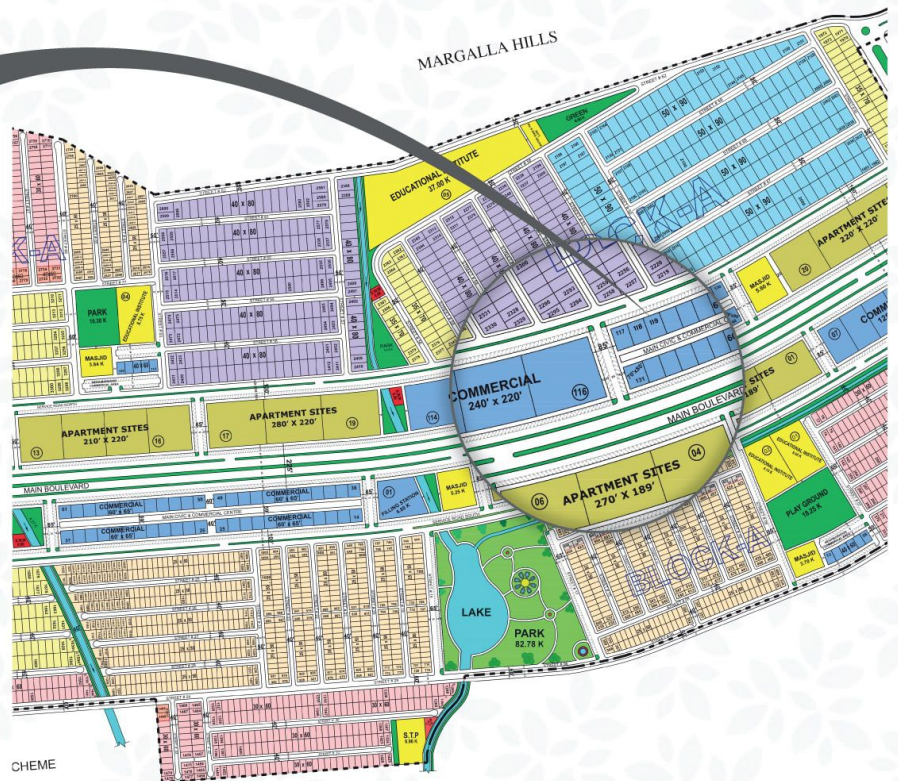
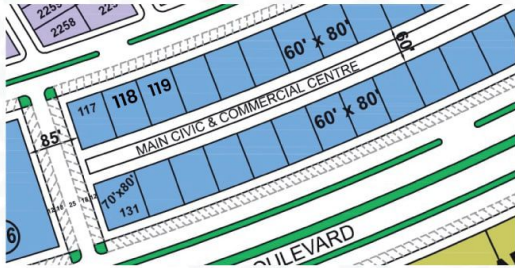
He Has been happily married to Mrs. Nishat Begum (Late) and has two children carrying forward the business in family.

Our Parents have raised us with highest level of moral and ethical values, that today we can try to pass them to our next generations.

May Almighty Allah rest our parents soul in peace. Ameen!

MASTER PLAN

PINE SEVEN (119)



Pine Arcade C-1 Commercial, B-17

Pine Arcade is our flagship project located in the most scenic sector of Capital Hills B-17, Islamabad. A bull's eye location has been chosen for Pine Arcade in Block C-1 Commercial. It is Located at the cross roads of 650+ villas, parks, mosque, hospital, community clubs, shopping malls, shopping malls, security guards round the clock, school, college and 3D Cinemas. This offers a very unique opportunity for investors to have more practical rental and investment return.



Pine Business Square, B-1 Commercial, B-17

Pine Business Square is our second commercial project located on the main boulevard leading to motorway M1 of the most scenic sector of Capital Hills B-17, Islamabad.

B1 Commercial has become the promising Commercial Hub, attracting major investments due to its strategic location. The project is situated at the heart of CPEC link route.

CPEC

China Pakistan
Economic Corridor



Pine Inn, B-1 Commercial, B-17

Pine Inn, a magnificent design featuring commercial ventures on the lower floors and luxury apartments on the 1st, 2nd, 3rd, 4th and 5th floors. Located on Main Boulevard, the Pine Inn is an ideal investment opportunity at this point in time and one we believe, you should not miss out on. Working closely with MPCHS to achieve their mission of establishing cooperative housing societies to promote real estate investment and provide quality housing options.



14-East, Block-A, Commercial, B-17

A Concept was driven from the belief that nature and cities can co-exist, 14-East is bringing a new commercial and residential theory to the real estate scene in Capital City Islamabad. With the next-generation market concept, top brands like Manolo Gelato, Second Cup etc is the amazing place to make your business boost up to the sky. As the first and only in the area they stand as landmarks of luxurious, self-sufficient apartments, with only access for the authorized. 14 East catering for its residents an international retail entertainment experiences.



Campus Inn 1, Block-A, B-17

Your campus at Doorstep.
In Campus Inn we have kept the student at core of Our Project, we have carefully tailored apartments/living areas, high end information Communication facilities, ensured privacy and security of each student. Here we have made their second home, they can trust us outside campus, where they can focus on what really matters; is to prosper in academics.



Campus Inn 2, Block-A, B-17

Your campus at Doorstep.
In Campus Inn 2, we have made their second home, they can trust us outside campus, where they can focus on what really matters; is to prosper in their academic



PINE SEVEN

By Pine Constructions



 ZARA  *Hard Rock Cafe* TOMMY HILFINGER ZARA



A seventh state of art project offerings (Shops, Offices and Luxury Apartments)
Pine7 is providing fine opportunities to start your business and residential needs
Located in Faisal Margalla City - FMC adjacent Sector B-17 Islamabad.



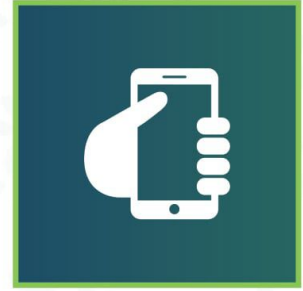
EFFICIENT & SMART AMENITIES



Wi-Fi Ready



Branded Doors



Smart Building



Open to Sky



Airy Rooms



**Tailor Made
Kitchen**



**Imported
Fittings**



**Corner
Location**



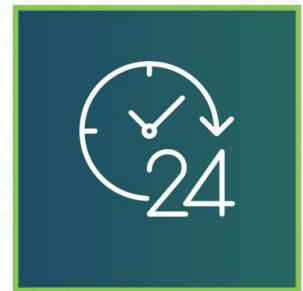
**Designer
Apartments**



**Private
Balcony**



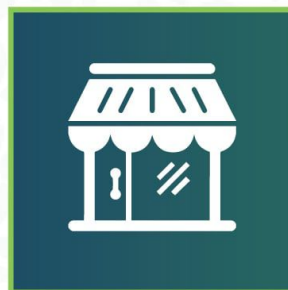
**Spacious
Parking**



24/7 Surveillance

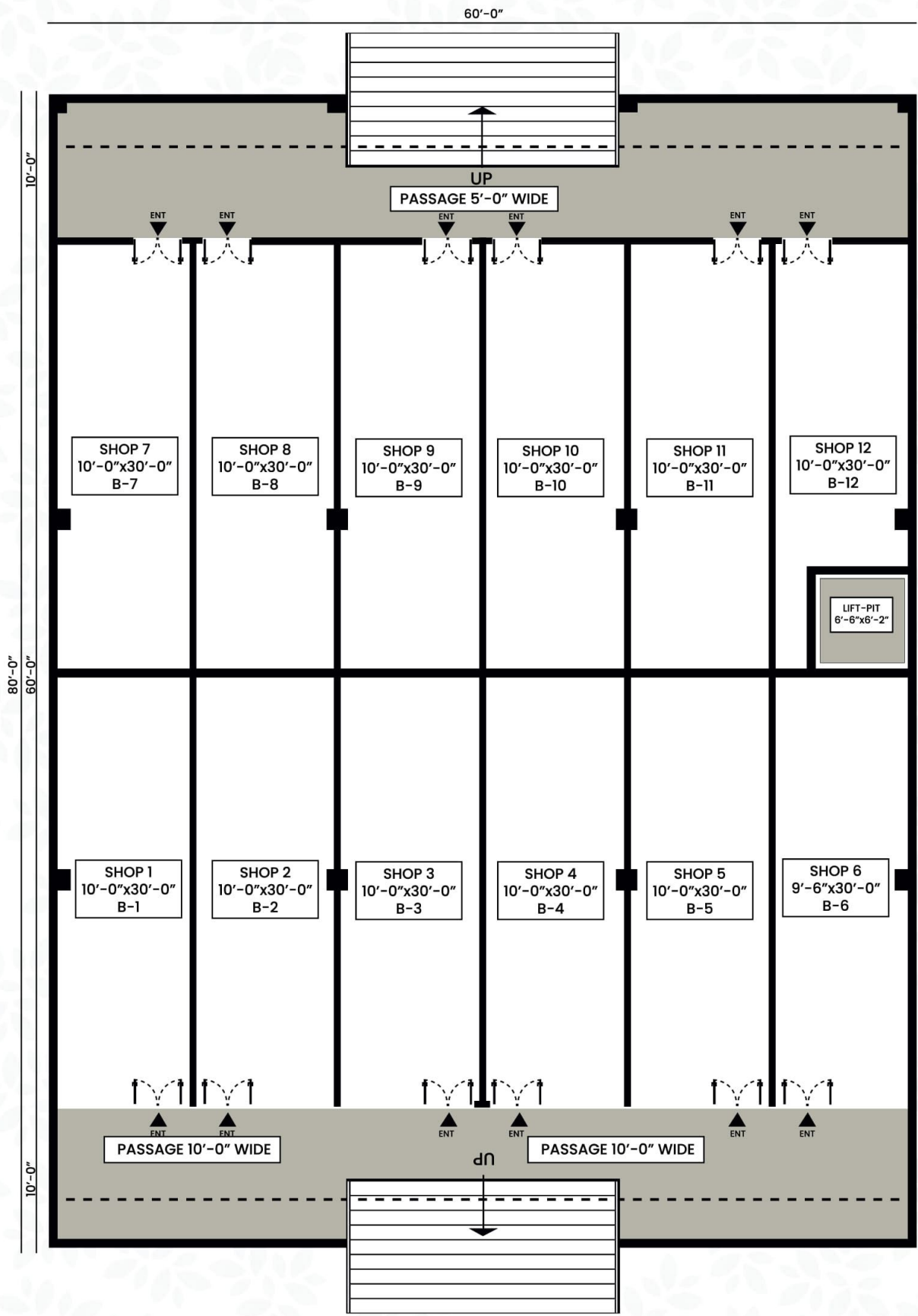


Gated Community



Business Size Shops & Offices

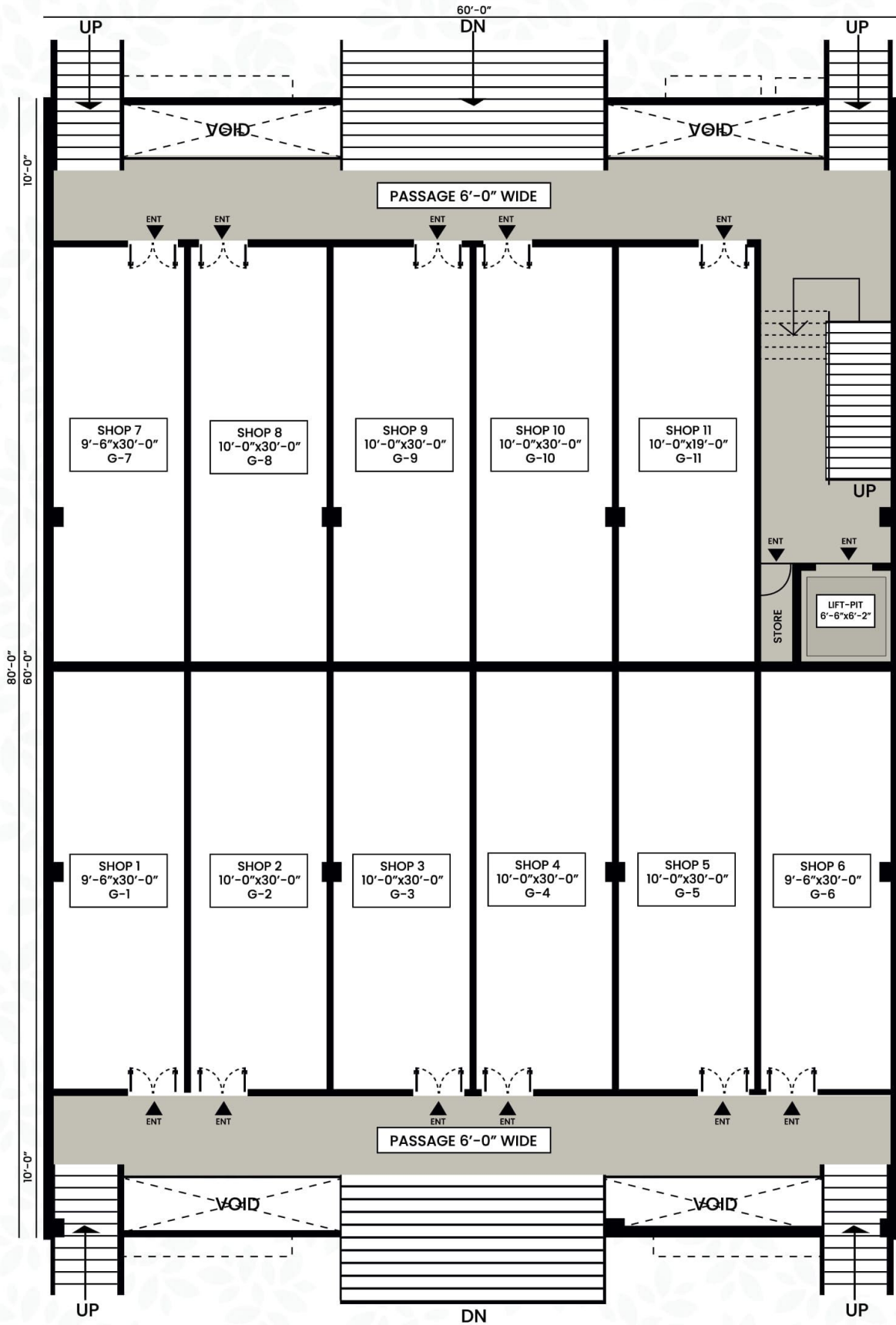
LOWER GROUND FLOOR PLAN (SHOPS)



All you need under one roof.



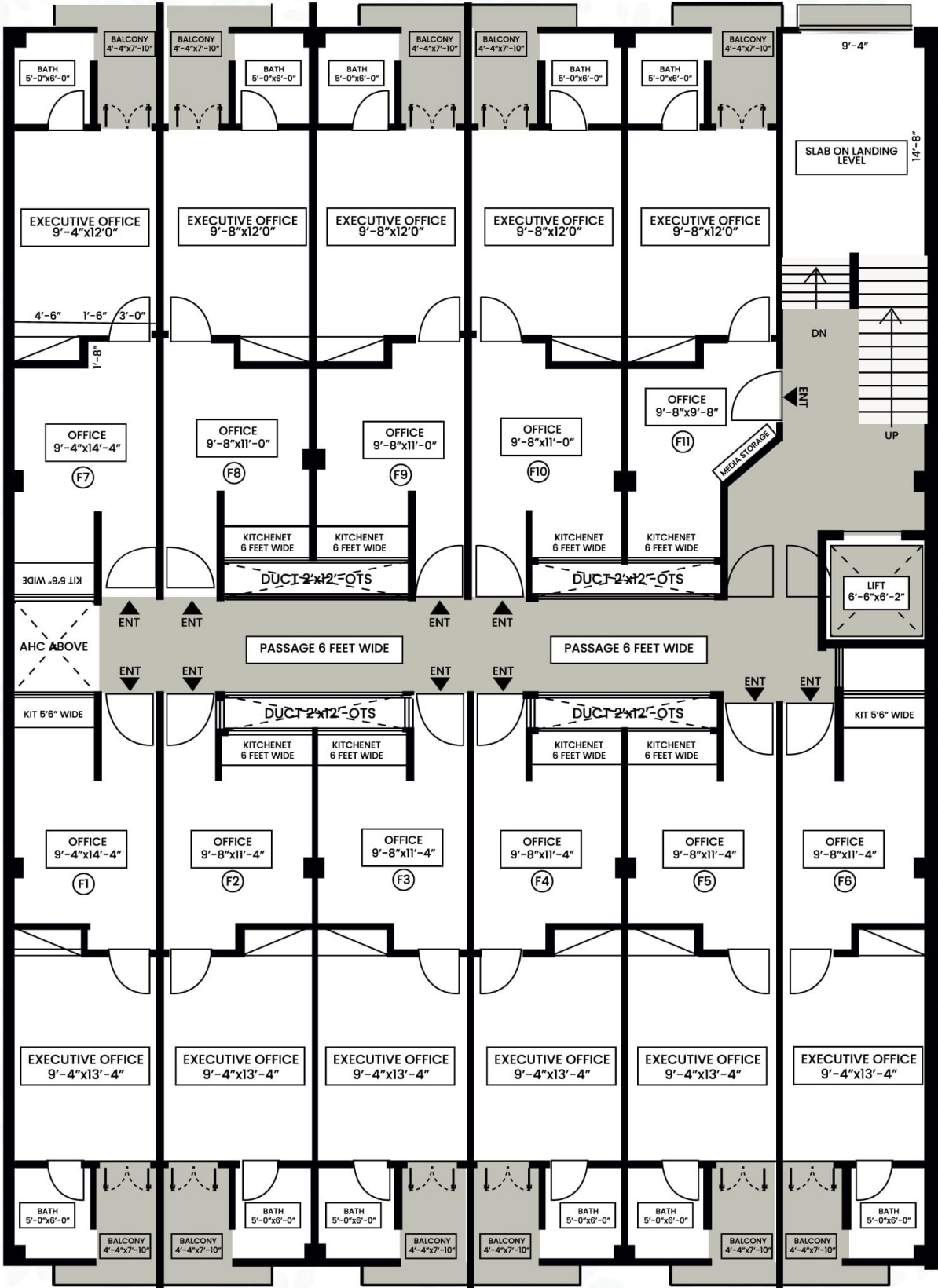
GROUND FLOOR PLAN (SHOPS)



A place that inspires you.



FIRST FLOOR PLAN (EXECUTIVE OFFICES)



Putting a plan into action, to assure your satisfaction!



FIRST FLOOR PLAN (OFFICES)

ISOMETRIC VIEW OF FLOOR PLATE

NO-OF OFFICES - PER FLOOR - 11



Gross Area
435 Sqft

- 1 OFFICE-01
- 2 OFFICE-02
- 3 OFFICE-03
- 4 OFFICE-04
- 5 OFFICE-05
- 6 OFFICE-06
- 7 OFFICE-07
- 8 OFFICE-08
- 9 OFFICE-09
- 10 OFFICE-10
- 11 OFFICE-11
- 12 ELEVATOR-SHAFT
PASSAGE & STAIRCASE

FIRST FLOOR PLAN (OFFICES)

ISOMETRIC VIEW OF OFFICE CAT-02

NO-OF OFFICES - PER FLOOR - 10



Gross Area

435 Sqft

- 1 ENTRANCE
- 2 KITCHENET
- 3 WAITING-SITTING
- 4 EXECUTIVE-OFFICE
- 5 REST-ROOM
- 6 EXECUTIVE-BALCONET

TYPICAL 2ND-6TH APARTMENTS

ISOMETRIC VIEW OF FLOOR PLATE
NO-OF APARTMENTS-PER FLOOR-05
NO-OF 2 BED-APARTMENTS-PER FLOOR-04
NO-OF 3 BED-APARTMENTS-PER FLOOR-01



Gross Area

2-BED APARTMENT: 875 Sqft
3-BED APARTMENT: 1285 Sqft

- 1 APARTMENT-01 (2BED)
- 2 APARTMENT-02 (2BED)
- 3 APARTMENT-03 (2BED)
- 4 APARTMENT-04 (2BED)
- 5 APARTMENT-05 (3BED)
- 6 SLAB-ON-LANDING
- 7 STAIRS & PASSAGE
- 8 ELEVATOR-SHAFT

TYPICAL 2ND-6TH APARTMENTS

ISOMETRIC VIEW OF 3 BED APARTMENT
NO-OF APARTMENTS-PER-FLOOR-01
TOTAL NO OF 3 BED APARTMENTS-05



- 1 ENTRANCE
- 2 KITCHEN
- 3 LOUNGE & LINEN ROOM
- 4 BED-ROOM (01)
- 5 BED-ROOM(02)
- 6 BED-ROOM(03)
- 7 LUXURY BALCONETS
- 8 LUXURY BALCONETS

Gross Area

3-BED APARTMENT: 1285 Sqft.

TYPICAL 2ND-6TH APARTMENTS

ISOMETRIC VIEW OF 2 BED APARTMENT
NO-OF APARTMENTS-PER-FLOOR-04
TOTAL NO OF 2 BED APARTMENTS-20



- 1 ENTRANCE
- 2 KITCHEN
- 3 LOUNGE & LINEN (ROOM)
- 4 BED-ROOM(01)
- 5 BED-ROOM(02)
- 6 BED-ROOM(04)

Gross Area

2-BED APARTMENT: 875 Sqft



PINE GROUP

of Companies

A PROJECT OF PINE CONSTRUCTIONS



HEAD OFFICE Suite N0. 15 Second Floor, Silver City Plaza G11 Markaz, Islamabad

SITE OFFICE Plot 14, Block A Commercial, B-17, Islamabad

051-8741111 | www.pineconstructions.com